



Chess pin puzzles 31 to 40

By

G Bud Games
<https://gbud.in>

February 15, 2022

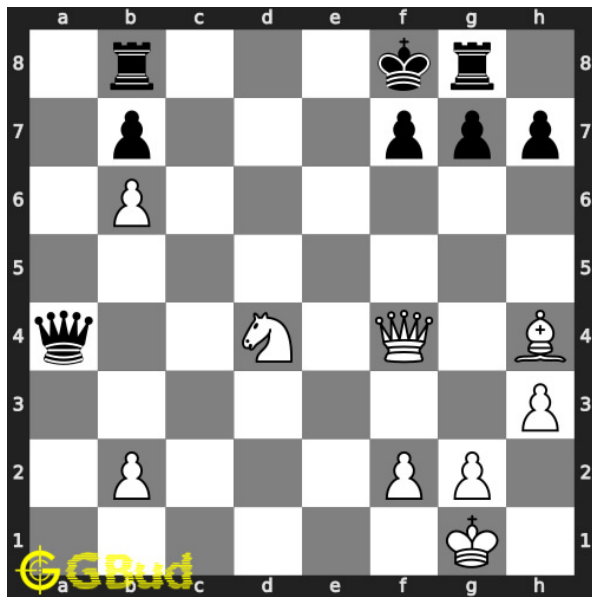
Contents

Chess pin puzzles 31 to 40	3
Play chess for free	4

List of Figures

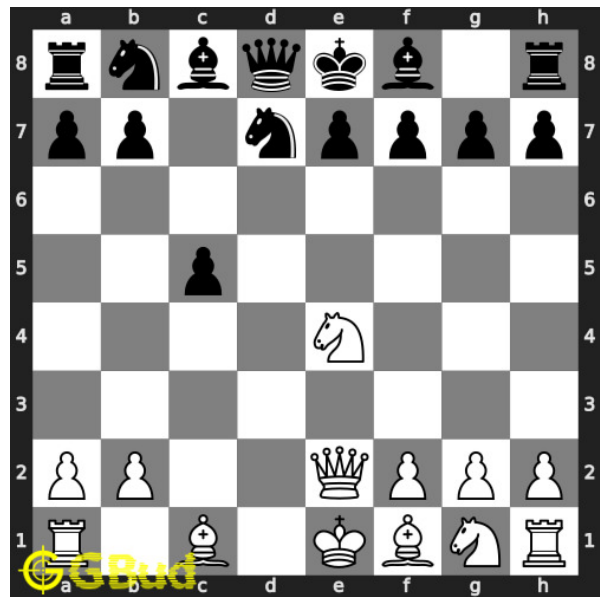
1	Solve other puzzles @ https://gbud.in/chsgppz	4
2	Play chess online for free. Solve puzzles and play with friends	4
3	Solve these Pin puzzles 31 to 40 puzzles online or view solutions by scanning this QR code or goto the link below .	5

Chess pin puzzles 31 to 40



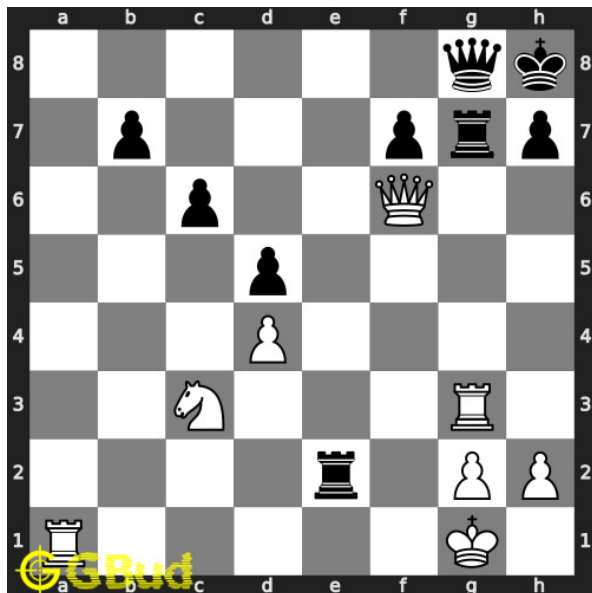
31. Mate in 2 moves

Level : medium, Next Move : White
Solution : <https://gbud.in/gs2yp84>



32. Mate in 1 move

Level : easy, Next Move : White
Solution : <https://gbud.in/gs2yp84>



33. Mate in 3 moves

Level : hard, Next Move : White
Solution : <https://gbud.in/gs2yp84>



Figure 1: Solve other puzzles @ <https://gbud.in/chsgppz>

Play chess for free



Figure 2: Play chess online for free. Solve puzzles and play with friends

Play chess for free at <https://gbud.in/chs>

We present you a platform to [play chess online with friends for free](#). No need to install any app. You can [play chess for free without registration or login](#).

Simple. You can do several chess related activities.

1. [solve chess puzzles](#)
2. [learn about chess](#)
3. [play chess with computer](#)
4. [play chess with friend](#)
5. [create your own chess games](#)
6. [fen viewer](#)
7. [fen editor](#)
8. [fen generator](#)
9. [pgn viewer](#)
10. [chess board editor](#)
11. [view famous chess games](#).



Figure 3: Solve these Pin puzzles 31 to 40 puzzles online or view solutions by scanning this QR code or goto the link below

<https://gbud.in/gs2yp84>

Solve these chess pin puzzles 31 to 40 and improve your chess games through improvement of your chess strategies and chess tactics. You can solve these [chess pin puzzles online](#). Alternatively, you can also [download](#) the [chess pin puzzles in pdf](#) which is printable. You can print these chess pin problems worksheet and solve without internet. These chess pin puzzles are a subset of [kids games](#).

Access the latest version of this article at

<https://gbud.in/blog/game/chess/chess-puzzles/chess-pin-puzzles-31-to-40.html>

The [term pin](#) in chess is used to define a constraint that a piece can not move. If the piece moves, it will lead to loss of [piece](#) or [check](#) or at a weaker [board](#) position. There are different types of pins available. Those are 1. [Absolute Pin](#), 2. [Relative Pin](#), 3. [Partial Pin](#) and 4. [Situational Pin](#).

Previous article : [« Chess pin puzzles 21 to 30](#)

Next article : [Chess queen puzzles 1 to 10 »](#)

[Back to top](#)

[Contact Us](#)

© GBud Games 2021